

Some Paths of Particular Interest

1. North Lane (Path 48) has survived almost unchanged from the distant past. Many of the roadways in Suffolk must have been just like this old trackway is today. Look especially for orchids and other spring flowers.
2. There is now a new footbridge across the stream to open up a walk out of the parish to Wingfield Church. This can be combined with North Lane to make a longer excursion.
3. For much of its length, Path 28/29 heads directly towards the church tower as do so many ancient paths, green roads and trackways elsewhere. To get the best views walk along it towards the village.
4. Path 38 from Kersley Hall Lane leads south to a bridleway from Wilby which offers good views across the valley. There is a shallow ford to cross the beck and a fine wide track all the way into Horham.
5. Paths 1, 2, 3, 4, 5, 6 & 7 offer the chance of a good circular walk from Doggets or Stradbroke Mill out to Battlesea Green and back.
6. Path 40 leads past Valley Farm, down to the beck and up the other side to the magnificent Thorpe Hall. At the Hall you can turn left to the Horham road or right towards Cat's Lane and Denham.

A leaflet is also available which gives a three mile circular walk closer to the village using paths 1, 2, 47, 42, 41, 37 & 36, starting and finishing at the Village Hall. It can be obtained from the Parish Council and Suffolk County Council Planning Department (20p).

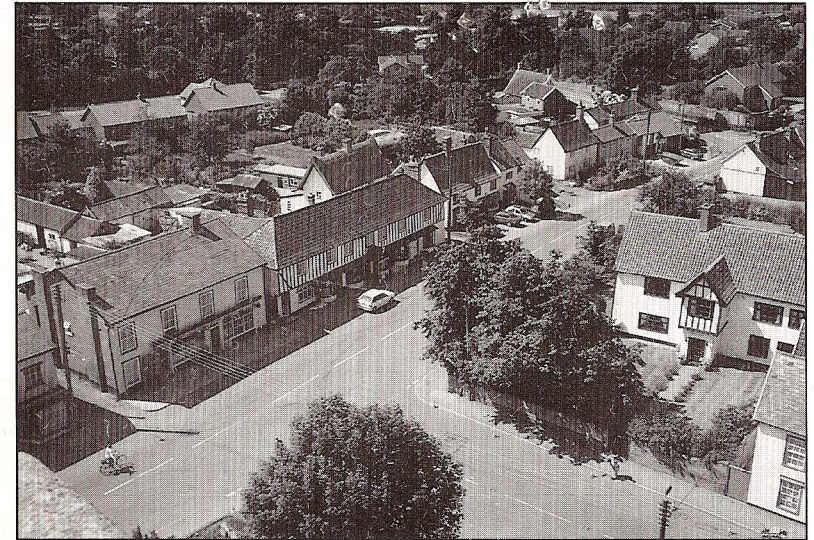
Funded by



Suffolk County Council

PARISH PATHS
partnership
A COUNTRYSIDE COMMISSION INITIATIVE

Walk around Stradbroke



From the top of the church tower

Stradbroke has a good network of marked footpaths and most have recently been cleared of obstructions and cut, making them much easier to follow and to walk. There are several new bridges across ditches which used to be difficult to cross and some recent sensible diversions and changes to certain paths have made them much more interesting and enjoyable to walk.

This leaflet has been produced to show where the paths are and to encourage more people to use them. Exploring our ancient network of paths and bridleways on foot offers the opportunity to see more of the wildlife and the beauty of the countryside within the parish. From them there are unexpected and surprising views of the village and of course of our magnificent church; views which can never be obtained from a car or from a road.

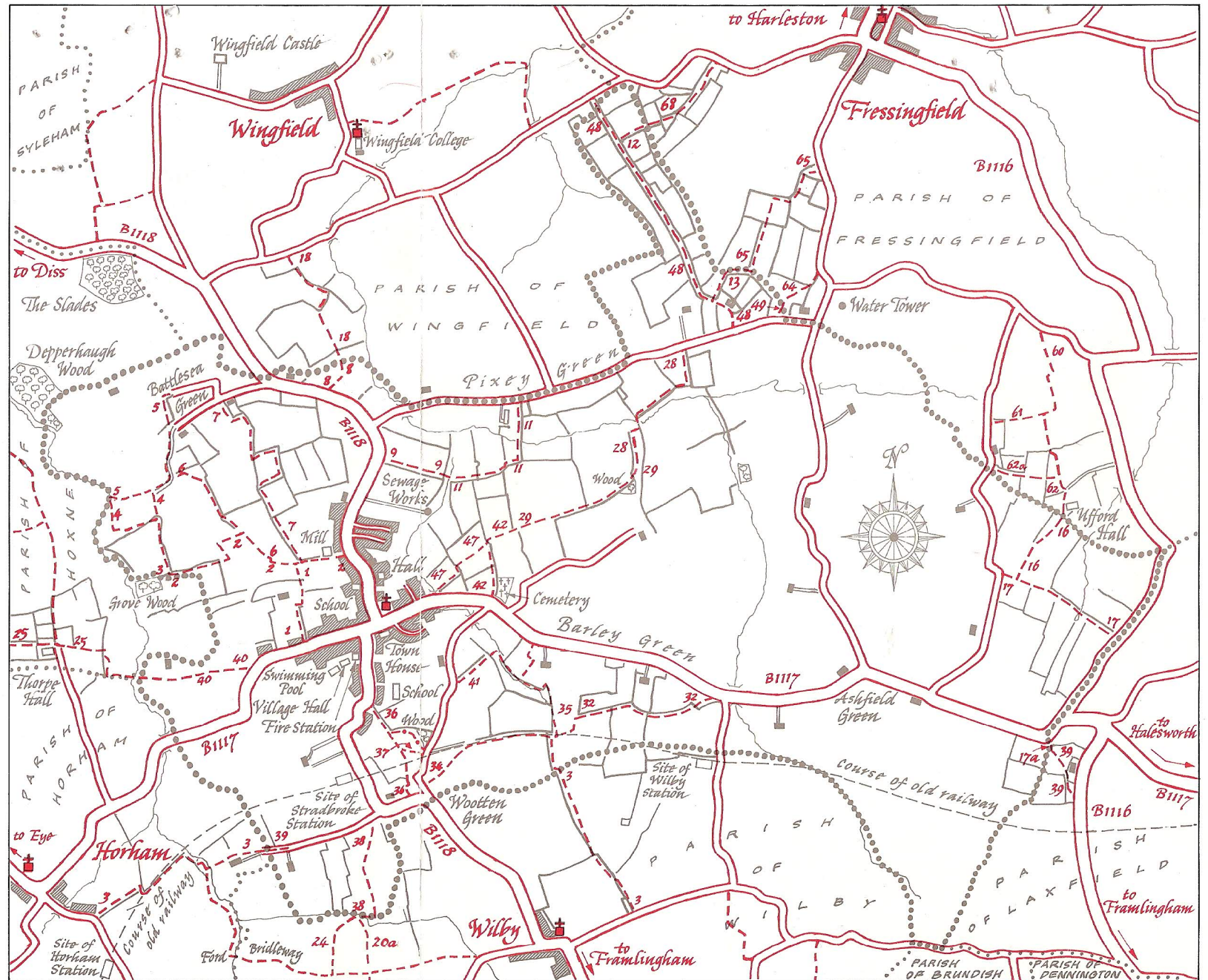
The right of way along footpaths is an ancient one, but please remember that the fields are the farmers' workshops and this right of access only applies to the width of the path itself. So, please do not stray from the paths and keep dogs under control.

Why not try some of them?

The Footpaths of Stradbroke

Key

	Road
	Numbered right-of-way
	Permissive path
	Driveway (private)
	Stradbroke parish boundary
	Other parishes
	Boundary hedges



Stradbroke Parish Council is a member of the Parish Paths Partnership. Every attempt has been made to show the footpaths and rights of way accurately and correctly on this map. However, in case of doubt the definitive map of rights of way may be examined by application to the Parish Clerk or to the Highways Department, Great Blakenham.

The Ordnance Survey maps which show these paths and those of surrounding parishes are;

Landranger 156 Saxmundham
Pathfinder 965 Halesworth

Until reprinting, neither of these maps show all the latest approved revisions and footpath diversions which are included in this leaflet.

Drawn by Graham Redelsperger and produced by Tarquin Publications for Stradbroke Parish Council. June 1994

0 Miles 1/4 1/2 3/4 1
Scale: 1 mile = 2 inches or 50 mm